

CASE STUDY

GO Switch® is a “Perfect Fit” for Owensboro Power Plant

Owensboro Municipal Utilities saves significant maintenance time and cost with GO Switch leverless limit switches.

The Power Plant Situation

The slurry valves at Owensboro Municipal Utilities were freezing in the scrubber area. Many maintenance hours were being invested to replace faulty limit switches. Operations power plant had resorted to bypassing switches that didn't work in order to minimize downtime and struggled to find a reliable solution.

Local TopWorx distributor, Fluidaire, reviewed their current application to understand what was causing the problem. As is typical for power plant applications, the environment was very harsh and required high-pressure washdown. Their existing mechanical limit switches were unable to adequately withstand the high-pressure washdown. As a result, they were being penetrated by water, dirt and limestone. The ingress of water and caustic material was causing the switches to fail.

Owensboro Municipal Utilities had tolerated faulty switches for years. They desired to replace their existing switches with a switch that was reliable and durable enough to withstand limestone, dirt and washdown. They wanted a totally sealed switch that would not be susceptible to moisture ingress. Ideally, it would have no target contact or wearing situation, so there would be no maintenance. They wanted a “fit and forget them” solution.

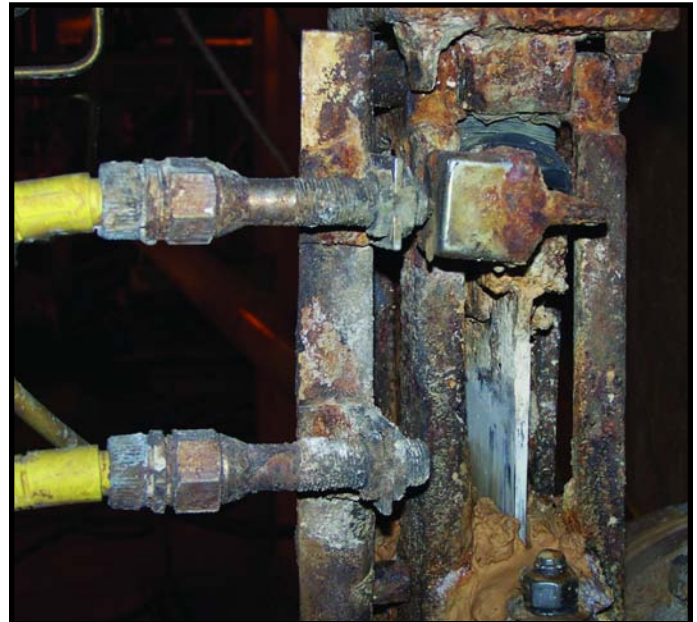


The GO Switch Solution

The TopWorx 70-Series GO Switch was the perfect solution. It has been proven reliable and durable in processing and manufacturing plants for over 30 years. Since it is a leverless limit switch, it does not require a lever arm to make it move. Therefore, there is no metal-to-metal contact, and virtually nothing to wear out. GO Switches are built to last for high cycle, dirty and physically abusive applications. With an IP65 and NEMA 4X rating, their design prevents ingress of caustics, moisture and particulate. They are completely potted and sealed, so no moisture can affect their operation. Other options include Nema 7, 9, 12, and IP68. Some models are even rated for use 20,000 feet underwater!

These features were a great attraction to the power plant. Budgets were tight, but the cost of a switch not working was even greater. They were impressed with the reliability of the 70-Series GO Switch and optimistic about moving forward.

Fluidaire worked closely with Owensboro Municipal Utilities to understand their installation needs. In the scrubber area alone, they installed one hundred (100) 70-Series GO Switches. They were so pleased with the solution and



Above GO Switch installation has been in successful operation for 10 years in scrubber area at Owensboro Municipal Utilities.

the support that they are expanding this effort to other areas of the plant.

“We have been very pleased with the GO Switch installation. We like the way they work, because they're reliable. We don't have to worry when we wash down. They suit our needs real well,” stated Bill Keach, Maintenance Planner for Owensboro Municipal Utilities.

About TopWorx

TopWorx delivers "control without compromise" by offering the uncompromising standard of excellence for valve control and position sensing. Valvetop® discrete valve controllers support multiple bus protocols, carry a variety of global approvals and operate in the most demanding plant environments. GO Switch® leverless limit switches provide the ultimate reliability and durability in the most demanding plant conditions, including hot, wet, cold, dirty, abusive, corrosive and explosive applications.

For more information about TopWorx visit www.topworx.com.